



GIRLS'
Leifa & Jane
TRIP

Personalized Concierge Itinerary
February 7-10, 2025

Personalized WDW Itinerary



Leifa & Jane's TRIP



Travel info:

Here is a summary of your travel dates and important info.

Friday, February 8, 2025

Flight Number: AA2346

Departure Time: 9:15am

Arrival Time: 11:20am

Recommend Uber coming *from* MCO

Monday, February 10, 2025

Flight Number: AA2346

Departure Time: 3:30pm

Arrival Time: 6:00pm

Recommend Lyft coming *from* WDW,
call around 9:00 AM

Hotel: Disney's Polynesian Village Resort – Check-in: 11am

Contact me:

Need to get in contact with me before or during your trip? Keep this info handy!



tallesttowertravel@gmail.com



xxx-xxx-xxxx



www.tallest-tower.com

Trip Overview

Here is a basic overview of your trip! I will be with you for whatever you may need along the way.



Day 1

Fly to Orlando, FL, Monorail Bar Crawl, Fireworks



Day 2

Brunch and Epcot, Fireworks



Day 3

Magic Kingdom and California Grill



Day 4

Resort Morning OR Disney Springs

Contents:

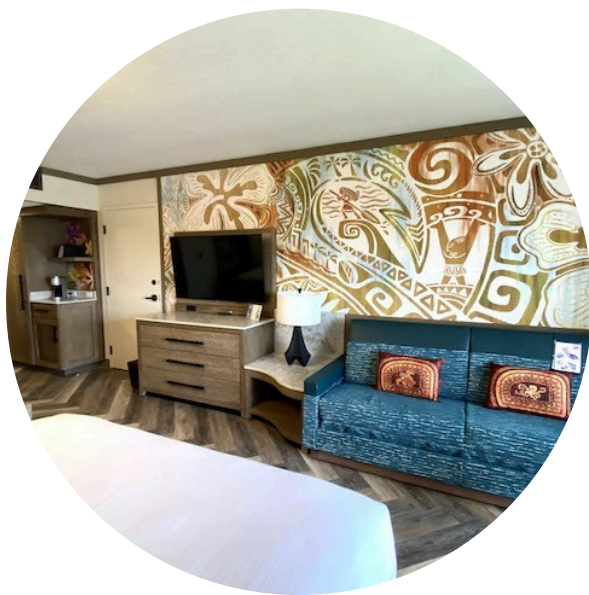
- Detailed Itinerary with all your must-dos
- Monorail Bar Crawl Map and Bingo Cards
- Outfit Tips and Weather Forecast
- Packing List including Park Bag essentials
- List of "no line" attractions and entertainment at Epcot and Magic Kingdom
- List of essential Disney Hacks tailored to your itinerary

Itinerary:

Day 1 – Arrival & Monorail Bar Crawl

Outfits: A: travel/arrival, B. chic comfort for dinner at Ohana

Day 1



- Upon arrival at MCO, take an Uber to Disney's Polynesian Resort
- Bell services will hold your bags for free until check-in.
- Check-in is at 3:00 **but rooms are often ready earlier.** Go to the front desk and let them know you're on property, and you will likely get a room very soon.
- Make sure to get a **First Visit** button at check-in, which the cast member will personalize with your names!

- With your bags stowed, it's time to begin your **Monorail Bar Crawl**, which will familiarize you with Polynesian, Grand Floridian, and Contemporary resorts, and give you your first views of Magic Kingdom!
 - Click **here** for your personalized bar crawl itinerary and bingo card!
- **7:00 PM Dinner at Ohana in Polynesian Resort**
- After dinner, make your way to the Polynesian beach for **prime viewing of the Magic Kingdom Fireworks beginning at 9:00PM**



Itinerary:

Day 2 – Brunch & Epcot Outfit: Cute & Comfortable for Brunch and a park day



Day 2

- You'll start your day by taking the Monorail to **Disney Contemporary Resort** for **10:30 AM brunch at Steakhouse 71**, the only Disney restaurant offering bottomless mimosas!
- When returning to the monorail after brunch, make sure to appreciate the mural by **Disney Legend Mary Blair**, whose iconic style is also seen in the It's A Small World ride at Magic Kingdom

- Per your request, your first plans at **Epcot** don't start until the afternoon, giving you plenty of time for a leisurely brunch.
- On the next page, you'll see **Leila's and Jane's Guide to Epcot**
- To get to Epcot from Contemporary:
 - monorail to Transportation & Ticket Center
 - monorail to Epcot
- **Epcot Lightning Lanes:**
 - **Guardians of the Galaxy** 1:00–2:00
 - **Remy's Ratatouille Adventure** 2:30–3:30
 - **Frozen Ever After** 4:10–5:10
 - **Soarin' Around The World** 6:30–7:30
- You'll be enjoying the **Epcot Festival of the Arts**. As we discussed, you'll eat a la carte from the dozens of festival booths, so no set dining reservation
- **Epcot Fireworks – Luminous: The Story of Us** – 9:00 PM

